



INSTALLATION INSTRUCTIONS

DYNA® 1" SHOCK LOWERING KIT

FXD (06-10), FXDWG (06-08), FXDWG (10-17)

WARNINGS & ALERTS

- TO MAINTAIN PROPER BALANCED GEOMETRY, WE RECOMMEND LOWERING THE FRONT AND REAR OF THE MOTORCYCLE EQUALLY. BURLY OFFERS FORK LOWERING KITS FOR YOUR MOTORCYCLE, TOO.
- THIS KIT IS DESIGNED FOR HARLEY-DAVIDSON™ OEM SHOCKS AND OEM TIRE SIZE ONLY.

DO NOT USE WITH LOWERED SHOCKS!

- THIS KIT IS NOT RECOMMENDED FOR THE MODELS THAT ARE LOWERED FROM THE FACTORY.
- THE OPERATOR MUST USE EXTREME CAUTION WHEN OPERATING A MODIFIED MOTORCYCLE, PARTICULARLY WHILE GETTING FAMILIAR WITH ITS ALTERED HANDLING CHARACTERISTICS AND REDUCED GROUND CLEARANCE.
- CHECK YOUR MOTORCYCLE FOR PROPER PARKING LEAN ANGLE AFTER INSTALLATION OF THIS KIT. YOUR SIDE STAND MAY REQUIRE MODIFICATION.
- FOLLOW ALL INSTRUCTIONS TO ACHIEVE PROPER CLEARANCE.
- ENCLOSED STICKER MUST BE APPLIED TO A VISIBLE AREA OF ANY MOTORCYCLE ON WHICH THE BURLY BRAND LOWERING KIT HAS BEEN INSTALLED IN ORDER TO INFORM POTENTIAL RIDERS THAT THE BIKE HAS BEEN MODIFIED.

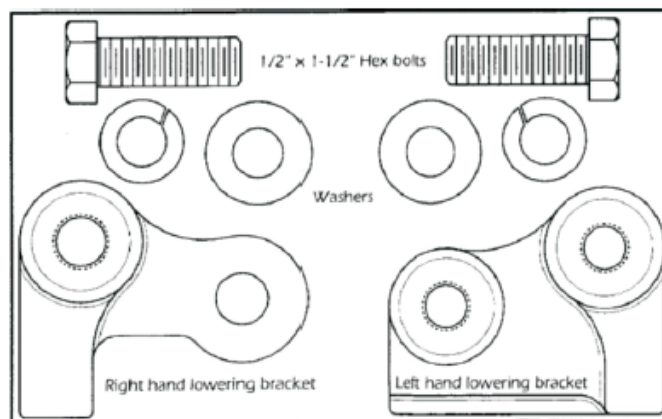
LIMITED GUARANTEE

We continually inspect and try to improve our products. All parts have been inspected prior to packaging, and our guarantee is limited to replacement of defective parts. This guarantee is in lieu of all guarantees or warranties implied or expressed. Because we can not control the application of our products, the buyer assumes risks for any and all damage caused by themselves or any third party, by virtue of failure of these parts. We make no warranty as to products distributed by us, expressed or implied, including without limitation, any warranties or merchant ability and fitness for particular purpose. We will, however, pass on all warranties made by the manufacturer, who has sole responsibility for performing such warranties. The manufacturer shall solely be responsible for any damage to person or property arising from design, manufacturing and testing of all products, and we accept no liability for such damages. We shall not be liable for indirect or consequential damages.

TOOLS REQUIRED

- Jack and/or Stand
- 5/16" Allen Wrench or Socket
- 3/4" Wrench
- 3/4" Socket, T50 Torx Socket & Ratchet
- 1/2" - 13 Tap & Handle
- Thread-locking compound (LocTite® 243)

PARTS INCLUDED



PART NUMBER

B28-22007

INSTALLATION INSTRUCTIONS

- Read all the instructions carefully before installing this kit on your motorcycle. Use your Harley-Davidson™ service manual as a reference while installing this kit.
- Place your motorcycle securely on a stand, jack, or blocks so the rear wheel is slightly off the ground.

INSTALLATION INSTRUCTIONS (CONT.)

WARNING!

Bike MUST be securely supported with the rear wheel slightly off the ground. Failure to securely support the bike could result in injury or death.

- Loosen the upper shock bolts. Remove the lower shock bolt and washers. Save these parts except for the nut on the left hand side; they will be re-used with this kit. If any of the OEM components are worn or damaged, they need to be replaced.
- Using the 1/2" - 13 Tap, chase the threads in the swingarm casting where the right shock mounts to the swingarm. Make sure the threads continue all the way through the hole as we will be bolting the bracket from the back side.
- Using the thread-locking compound and the supplied 1/2" x 1-1/2" Hex bolt and washers, install the right lowering bracket to the inside of the swingarm at the shock mounting boss (Figure 1).
- Please note that each kit comes with a left and right bracket.
- Using the thread-locking compound and supplied 1/2" x 1-1/2" Hex bolt and washers, install the left lowering bracket to the inside of the swingarm at the shock mount boss (Figure 2).
- Using the thread-locking compound reinstall the stock bolt and washer, but do not fully tighten.
- Repeat the procedure on the left side shock.
- Remove motorcycle from the lift and tighten all three bolts to 40 ft./lbs using a torque wrench.
- Check the spring preload on the shocks. Adjustment may be necessary for some people, depending on their weight and ride preference (soft or stiff). Adjust preload as needed per factory manual.

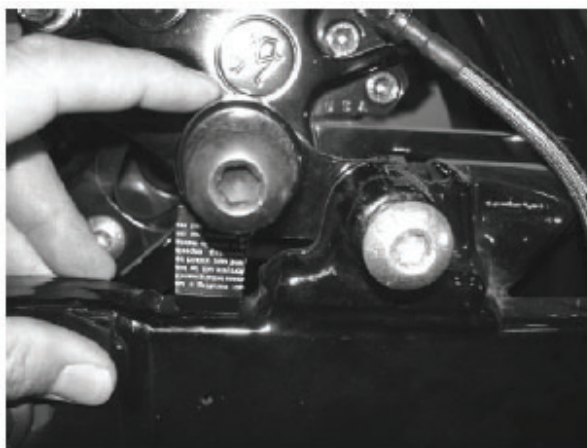


Figure 1



Figure 2